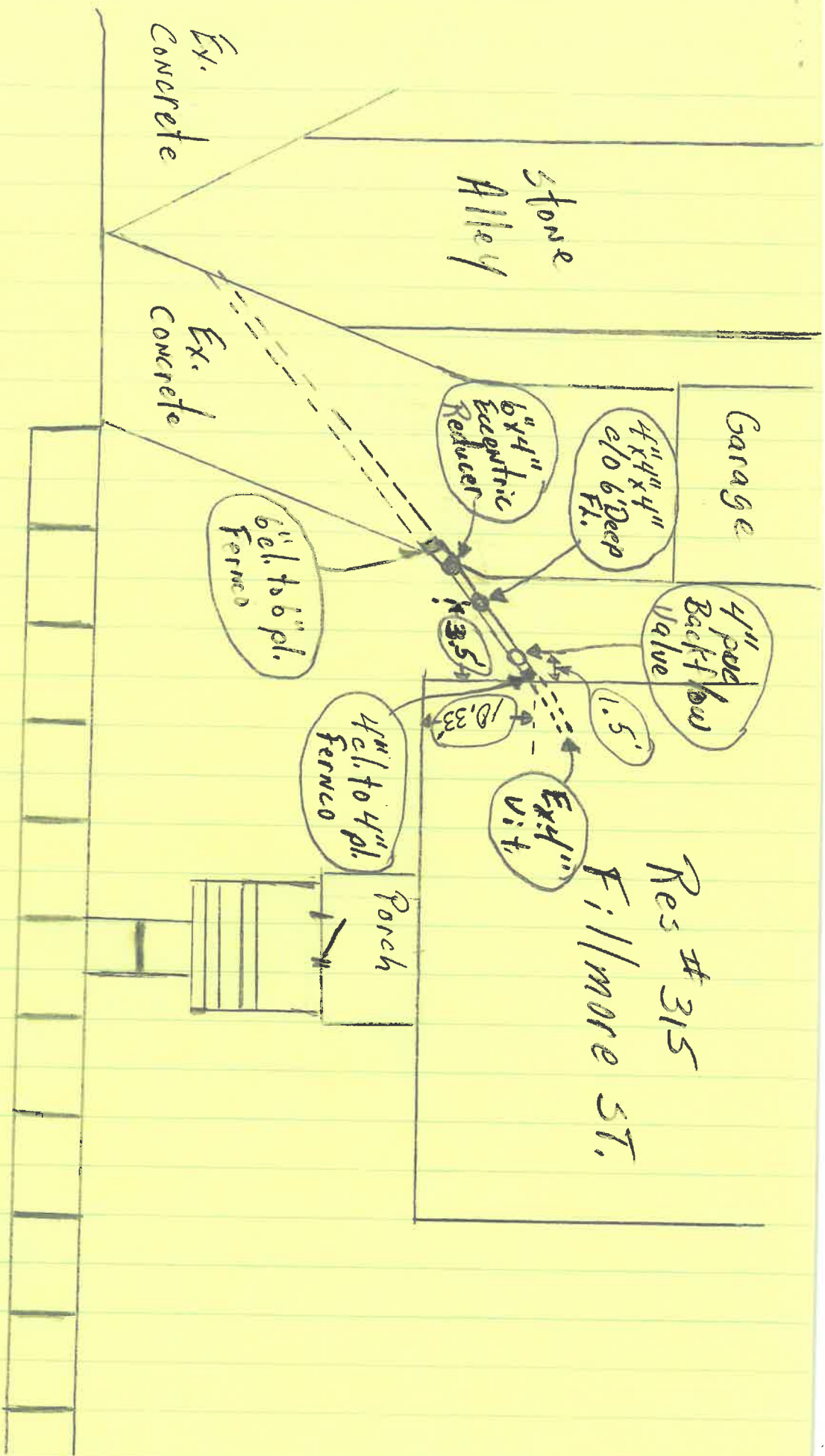
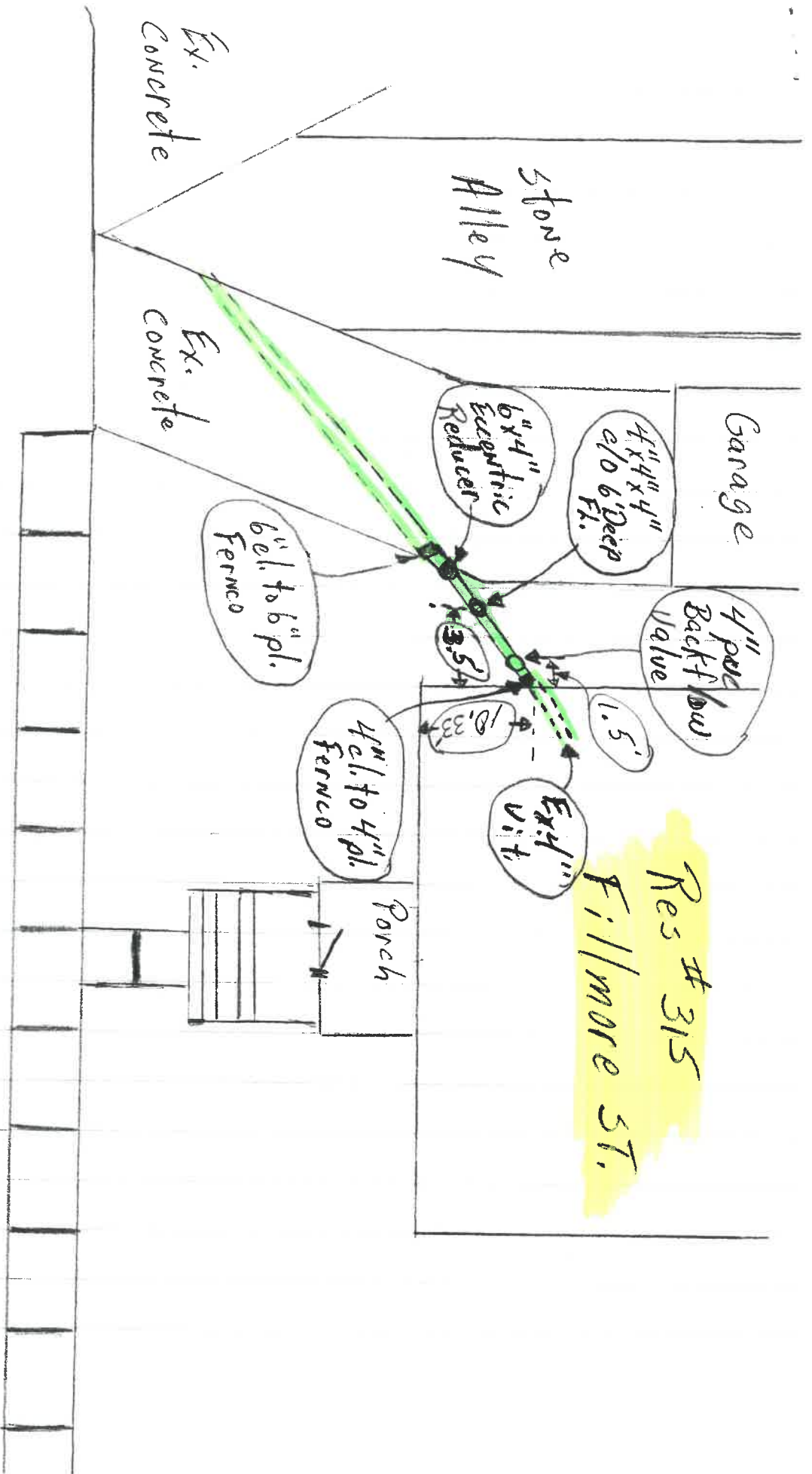


Date Installed: 4-24-07  
 Installed by: Concrete Specialists - John + Hae Schinck  
 Inspected by: Rex Moll



Res # 315  
Fill more ST.

Date Installed: 4-24-07  
 Installed by: Concrete Specialists - John & Hue Schinck  
 Inspected by: Rex Moll



Res # 315  
 Fill more ST.

Date Installed: 4-24-07  
 Installed by: Concrete Specialists - John + Hue Schinick  
 Inspected by: Rex Mo11